

Radiant Stripes Cushion

by Kirsten Ballering



Radiant Stripes Cushion

By Kirsten Ballering

MATERIALS

Scheepjes Catona (100% Mercerised Cotton; 50g/125m)

Yarn A 106 Snow White x 3 balls

Scheepjes Glow up (100% Polyester; 10 x 25g/52m) x 1 colour pack, includes following colours: 1002 Stardust Grey, 1003 Aqua Aura, 1004 Celestial Mint, 1005 Moonbeam Green, 1006 Electric Lime, 1007 Neon Glow, 1008 Solar Flare, 1009 Dusky Coral, 1010 Blush Nebula and 1011 Mystic Bloom
50 x 50cm (20 x 20in) cushion cover and insert
White sewing thread to match Yarn A
3mm crochet hook

GAUGE/TENSION

Each Square measures 11 x 11cm (4¼ x 4¼in) using a 3mm hook

MEASUREMENTS

Crocheted Cover measures 48 x 48cm (19 x 19in) and fits 50 x 50cm (20 x 20in) cushion cover

ABBREVIATIONS (UK TERMS)

BLO back loop(s) only: insert hook under back loop(s) only
ch-1 sp(s) chain 1 space(s): number denotes number of chains in chain space
ch-sp(s) chain space(s)

dc double crochet
htr half treble crochet
RS right side
sp(s) space(s)
ss slip stitch(es)
st(s) stitch(es)
WS wrong side
(.....) x times work the instructions between brackets the total number of times stated
***.....; rep from * x times** work the instructions after * and then repeat that section a further number of times as stated

CROCHET TERM CONVERSIONS

UK	US
dc double crochet	sc single crochet
htr half treble	hdc half double crochet

PATTERN NOTES

Cover is made up of 16 Squares with colourful stripes. Make 8 Squares in both colourways. Squares are crocheted in rows, turn after each row. Squares are joined with dc sts through back loops after which Border is added. See table for colours used for Square 1 and 2. See Schematic: Cover Layout for placement of Squares.

Yarn	Colourway 1 (make 8)	Colourway 2 (make 8)
B	1002 Stardust Grey	1005 Moonbeam Green
C	1009 Dusky Coral	1003 Aqua Aura
D	1008 Solar Flare	1004 Celestial Mint
E	1007 Neon Glow	1011 Mystic Bloom
F	1006 Electric Lime	1010 Blush Nebula

INSTRUCTIONS

FRONT

See Crochet Chart 1: Square.

Using Yarn A, ch24.

Row 1 (RS) Starting in second ch from hook, 23htr. Fasten off, turn. [23 htr]

Row 2 (WS) Join Yarn B with ss in first st, ch1 (does not count as st throughout), 1htr in same st, 22htr, turn.

Row 3 Ch1, 23htr, fasten off, turn.

Row 4 Join Yarn A with ss in first st, ch1, 1htr in same st, 22htr, fasten off, turn.

Rows 5-6 Rep Rows 2-3 using Yarn C.

Row 7 Rep Row 4.

Rows 8-9 Rep Rows 2-3 using Yarn D.

Row 10 Rep Row 4.

Rows 11-12 Rep Rows 2-3 using Yarn E.

Row 13 Rep Row 4.

Rows 14-15 Rep Rows 2-3 using Yarn F.

Row 16 Rep Row 6. Fasten off.

Border

Round 1 (RS) With RS facing, join Yarn A with ss to htr of Row 16, 1dc in each htr, ch2 in corner, 1dc in row end, (2dc in next row end, 1dc in next row end) to last row end, 1dc in last row end, ch2 in corner, 1dc in each st, ch2 in corner, 1dc in row end, (2dc in next row end, 1dc in next row end) to last row end, 1dc in last row end, ch2 in corner, 1dc in each htr to end, ss to first htr. Fasten off and weave in ends. [23 dc along each side, 4 corner ch-2 sps]

Joining the Squares

See Schematic: Cover Layout and Crochet Chart 2: Joining.

Put Squares in correct position with RS facing up. Join Squares with dc join on WS. Take first two Squares RS together. Join Yarn A with ss through ch-2 sps of both Squares. *1dc in ch-2 sp, 1dc BLO across Squares, 1dc in ch-2 sps, take next two Squares RS together; rep from * for every Square until end of join, make sure to check layout throughout. Fasten off. Rep this join for all sides that need to be joined.

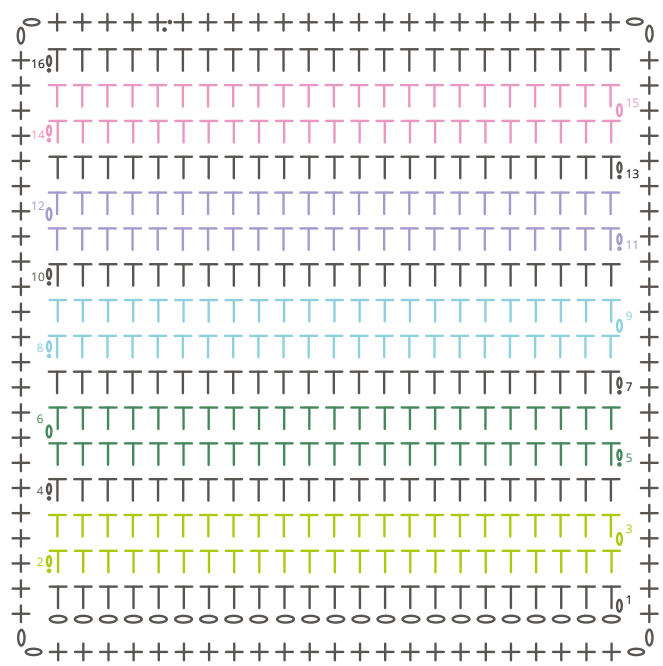
Border

Join Yarn A with ss to any corner sp, 1htr in same sp, 1htr in each st and ch-sp to end of side, *(1htr, ch2, 1htr) in next corner sp, 1htr in each st to end of side; rep from * 2 more times, 1htr in corner sp, ch2, join with ss to first htr. Fasten off.

To Finish

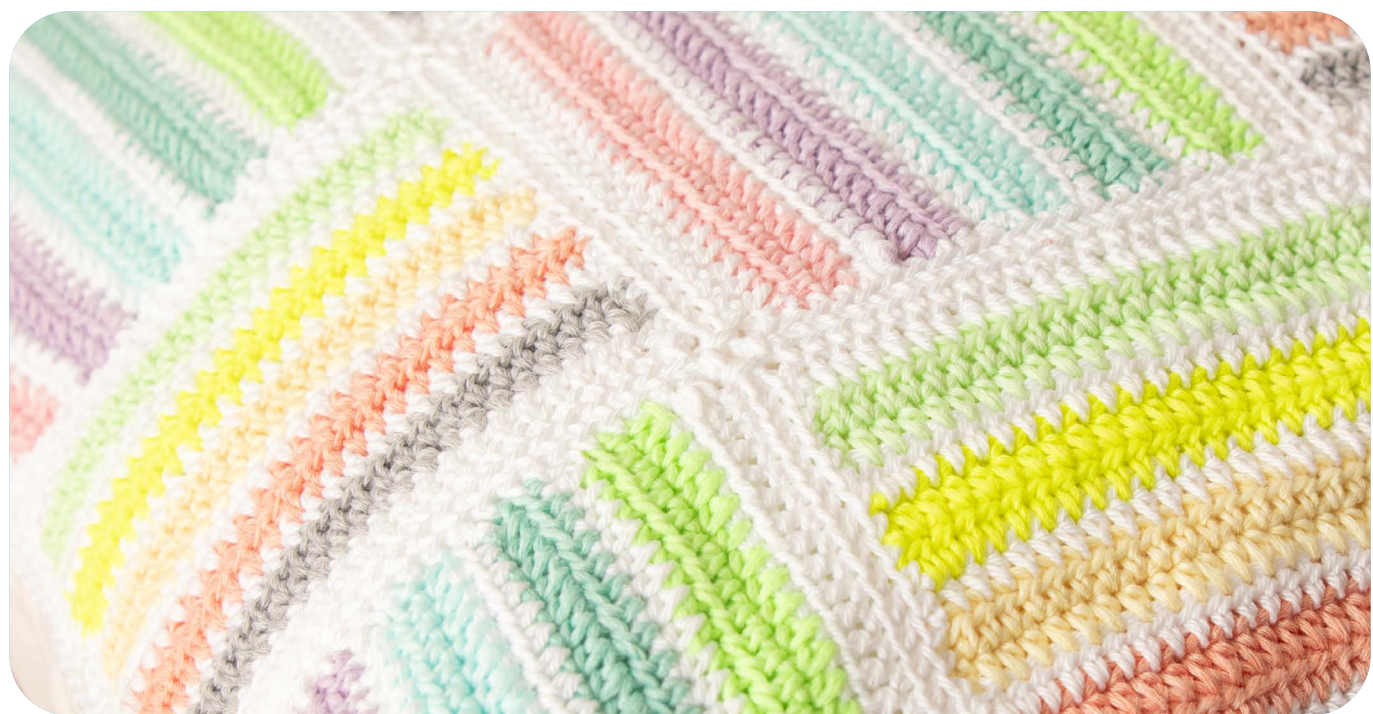
Weave in all ends and block Front to 48 x 48cm (18 x 18in). Place WS of Front on RS of cushion cover, pin corners and side to cushion cover. Using small backstitches, sew the back loop of each htr to the cushion cover.

CROCHET CHART 1: SQUARE

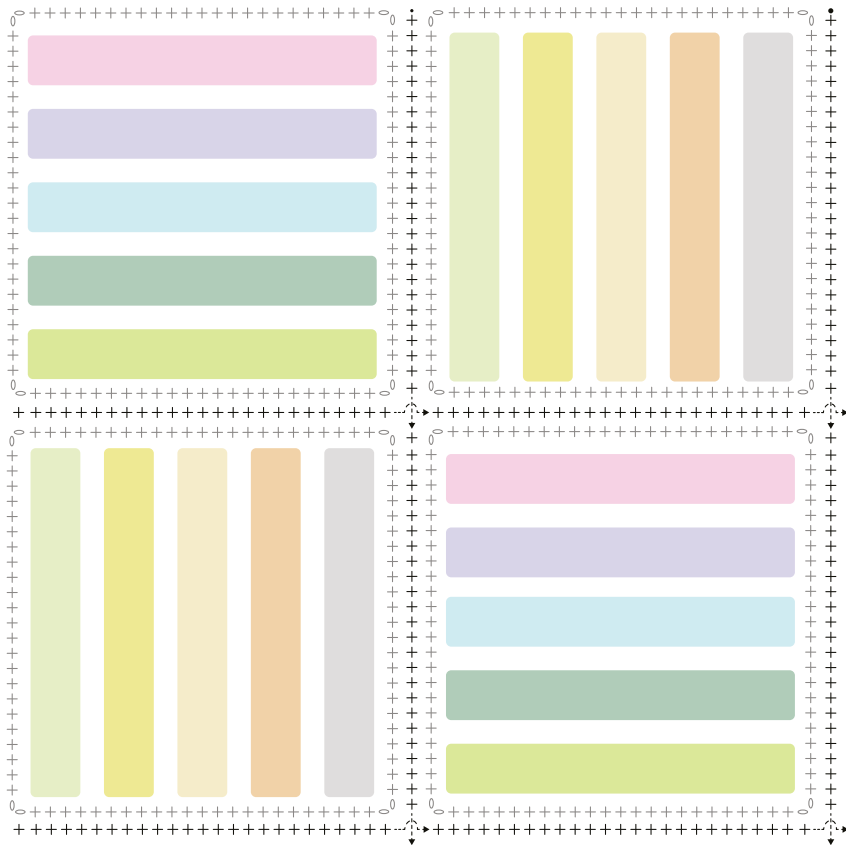


KEY

- ss
- ch
- ⊕ dc
- ⊥ htr



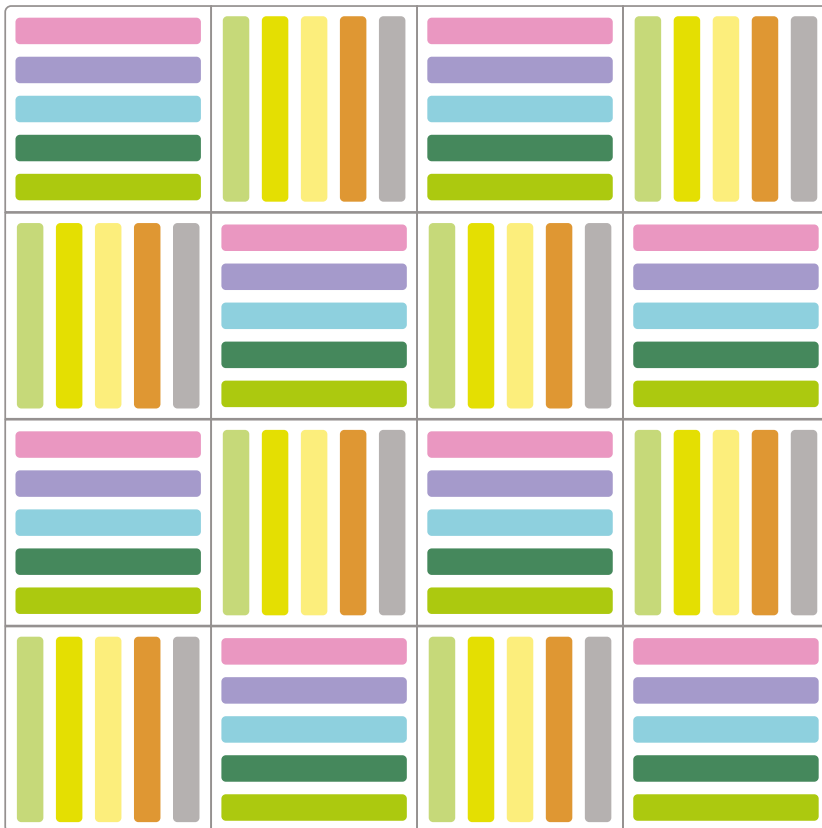
CROCHET CHART 2: JOINING



KEY

- ss
- ch
- + dc
- ⊥ htr

SCHEMATIC: COVER LAYOUT



Pattern copyright © Scheepjes.com. This pattern is available for unlimited personal use. You may print a copy of the pattern or keep a digital copy for personal use only. Do not reproduce this pattern or sell this pattern (either digitally or in print). This document may not be posted online, either as a complete document or in part. You are allowed to sell items that are made using this pattern as long as the designer is credited.