

Oh So Comfy Hat

by Scheepjes



Oh So Comfy Hat

By Scheepjes

MATERIALS

[Scheepjes Woolwise](#) (100% Recycled Superwash Merino Wool; 100g/200m)
717 Deep Turmeric x 1 ball
4.50mm knitting needles
85mm (3¼in) pom pom maker

GAUGE/TENSION

19 sts and 29 rows in lace pattern measures
10 x 10cm using 4.50mm needles

MEASUREMENTS

Height: 22cm (8½in), excl. pom-pom
Circumference: 51cm (20in)
Fits adult head circumference of approx.
56-61cm (22-24in)

ABBREVIATIONS

k knit
k2tog knit 2 sts together: insert needle knitwise into first 2 sts and knit them together
p purl
rep repeat
RS right side
skpo slip 1 st, knit 1 st, pass slipped st over
sl1 kwise slip 1 st knitwise
sl1 pwise slip 1 st purlwise
st(s) stitch(es)
WS wrong side
yo yarn over

(.....) x times/to end work instructions between brackets the *total* number of times stated

[] number of sts on a given row

PATTERN NOTES

Hat is knit back and forth in rows, starting from the Brim and working up to the Crown. Once you have knit the Brim, a lovely lace pattern is introduced that will be worked till the end of the Crown; simply skip the yo once you reach the Crown section to decrease automatically. To finish, the back seam is closed and an optional fluffy pom pom is added on top to complete the look.

INSTRUCTIONS

Brim

Cast on 94 sts.

Row 1 (RS) Sl1 kwise, p1, (k2, p2) to end. [94 sts]

Row 2 (WS) Sl1 pwise, k1, (p2, k2) to end.

Rows 3-9 Rep Rows 1-2 a further 3 times, then rep Row 1 once more.

Rep Row 2 once more, and increase evenly by 5 sts. [99 sts]

Lace Pattern

See Knitting Chart 1: Lace Pattern on next page.

Row 1 (RS) Sl1 kwise, k2, yo, (skpo, k1, k2tog, yo, k3, yo) to last 8 sts, skpo, k1, k2tog, yo, k3. [99 sts]

Row 2 and all following alternate rows (WS)

Sl1 pwise, p to end.

Row 3 Sl1 kwise, k3, (k1, k2tog, yo, k5) to last 7 sts, k1, k2tog, yo, k4.

Row 5 Sl1 kwise, k3, (k2tog, yo, k6) to last 7 sts, k2tog, yo, k5.

Row 7 Sl1 kwise, k2, k2tog, (yo, k6, k2tog) to last 6 sts, yo, k6.

Row 9 Sl1 kwise, k1, k2tog, yo, (k3, yo, skpo, k1, k2tog, yo) to last 7 sts, k3, yo, skpo, k2.

Row 11 Sl1 kwise, k3, (k4, yo, skpo, k2) to last 7 sts, k4, yo, skpo, k1.

Row 13 Sl1 kwise, yo, skpo, k1, (k5, yo, skpo, k1) to last 7 sts, k5, yo, skpo.

Row 15 Sl1 kwise, k1, yo, skpo, (k6, yo, skpo) to last 7 sts, k7.

Row 16 Sl1 pwise, p to end.

Rep Rows 1-16 twice more, then rep Rows 1-2 once more.

Crown

See Knitting Chart 2: Crown on next page.

Row 1 (RS) Sl1 kwise, k3, (k1, k2tog, k5) to last 7 sts, k1, k2tog, k4. [87 sts]

Row 2 and all following alternate rows (WS) Sl1 pwise, p to end.

Row 3 Sl1 kwise, k3, (k2tog, k5) to last 6 sts, k2tog, k4. [75 sts]

Row 5 Sl1 kwise, k1, k2tog, (k4, k2tog) to last 5 sts, k5. [63 sts]

Row 7 Sl1 kwise, k2tog, (skpo, k1, k2tog) to last 5 sts, k3, skpo. [39 sts]

Row 9 Sl1 kwise, k1, (k1, skpo) to last 4 sts, k1, skpo, k1. [27 sts]

Row 11 Sl1 kwise, (k2tog) to end. [14 sts]
 Break yarn, leaving long tail hanging.
 Thread tail through remaining sts, pull tight and fasten off. Close seam at the back.

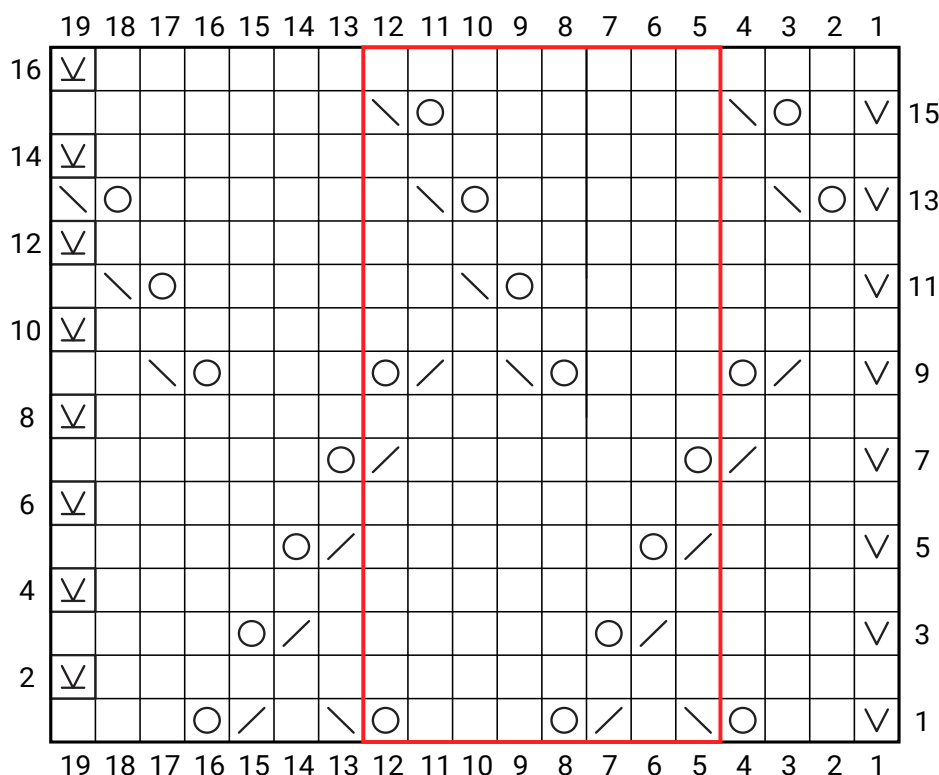
TO FINISH

Weave in all ends and block to measurements.
 Optional: create a pompom using leftover yarn and attach to top of Hat.

Scan to learn all about Woolwise and discover more patterns!



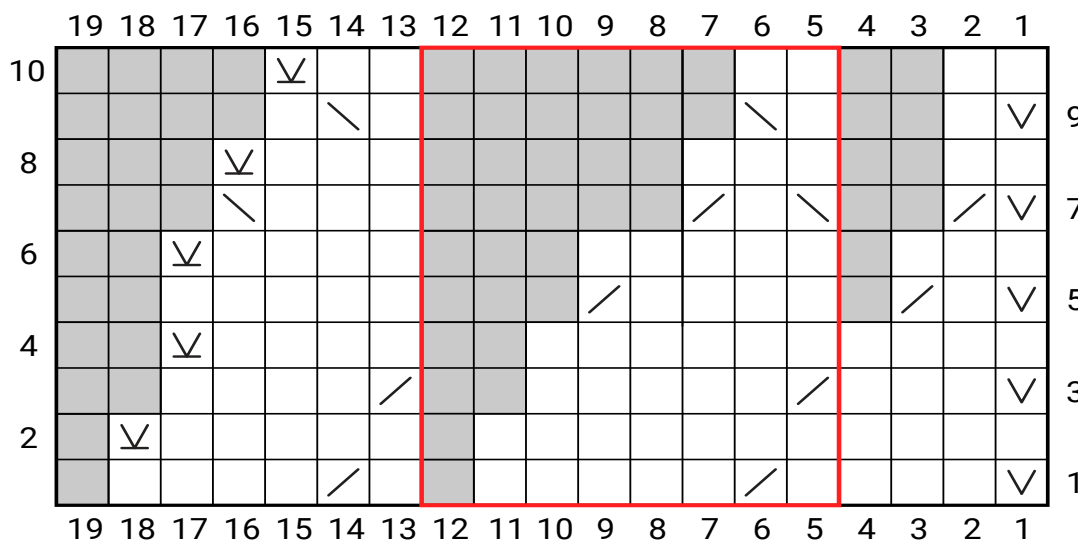
Knitting Chart 1: Lace Pattern



Key

- RS: k
WS: p
- ∇ sl1 kwise
- ∇ sl1 pwise
- yo
- ∖ skpo
- / k2tog
- patt rep
- no st

Knitting Chart 2: Crown



Pattern copyright © Scheepjes.com. This pattern is available for unlimited personal use. You may print a copy of the pattern or keep a digital copy for personal use only. Do not reproduce this pattern or sell this pattern (either digitally or in print). This document may not be posted online, either as a complete document or in part. You are allowed to sell items that are made using this pattern as long as the designer is credited.