

Heart Blanket
by Scheepjes

Heart Blanket

By Scheepjes, inspired by design from Mary Ann Frits

MATERIALS

Scheepjes Stone Washed (78% Cotton, 22% Acrylic; 50g/130m)

Yarn A 801 Moon Stone x 12 balls

Scheepjes Stone Washed Colour Pack (78% Cotton, 22% Acrylic; 10 x 25g/65m)

Yarn B different colours from 2 Colour Packs
Crochet hook 3.5mm

GAUGE/TENSION

19 tr measure 10cm using a 3.5mm hook

ABBREVIATIONS (UK TERMS)

- [] number of sts on a given row/round
- ch chain(s)
- ch-1 sp chain 1 space(s): number denotes number of chains in chain space
- dc double crochet
- rep repeat
- RS right side
- sk skip
- st(s) stitch(es)
- tr treble crochet
- WS wrong side
- yoh yarn over hook
- *.....; rep from * x times/to end work instructions after * and then repeat that section as specified; the same applies to any number of asterisks: **.....; rep from * etc.

SPECIAL ABBREVIATIONS

- extended tr** extended treble: yoh, insert hook in st indicated, pull up loop at height of current row, yoh and pull through 2 loops on hook
- shell** (2tr, ch1, 2tr) in st indicated

CROCHET TERM CONVERSIONS	
UK	US
dc double crochet	sc single crochet
tr treble crochet	dc double crochet

PATTERN NOTES

Use Yarn A as main colour and the different colours from the colour packs as Yarn B. Take new colour for Yarn B for each row with shells and divide colours of colour packs evenly throughout whole Blanket. Change colour during last yoh of last st before row of new colour. Crochet last st until there are 2 loops remaining on hook, yoh and pull new colour through 2 loops on hook.

INSTRUCTIONS

See Crochet Chart: Heart Blanket.

Using Yarn A, ch190.

Row 1 (RS) 1tr in 4th ch from hook (skipped ch3 counts as 1 tr), 1tr in each ch to end of row, change to Yarn B and fasten off Yarn A, turn. [188 tr]

Row 2 (WS) Ch3(counts as 1 tr throughout), 1tr in first tr, ch2, sk 5 tr, 1shell in next tr, *ch2, sk 6 tr, 1shell in next tr; rep from * 24 more times, ch2, sk 5 tr, 2tr in third ch, change to Yarn A and fasten off Yarn B, from now on turn after every row. [26 shells]

Row 3 Ch1(does not count as a st), 1dc, ch1, skip 1 tr, skip 1 tr van 2 rows below, 2 extended tr 2 rows below over ch-2 sp from previous row, *ch2, sk 2 tr from previous row, 1dc in ch-1 sp, ch2, sk 2 tr from previous row, sk 2 tr of 2 rows below, 2 extended tr 2 rows below over ch-2 sp from previous row; rep from * 25 more times,

ch1, skip 1 tr, 1dc in third ch, change to Yarn B and fasten off Yarn A.

Row 4 Ch3, 1tr in ch-1 sp, *2tr, 2tr in ch-2 sp, 1tr in dc, 2tr in ch-2 sp; rep from * 25 more times, 2tr, 1tr in ch-1 sp, 1tr in dc, change to Yarn A and fasten off Yarn B.

Rep Rows 2-4 until Blanket measures approx. 110cm.

Border

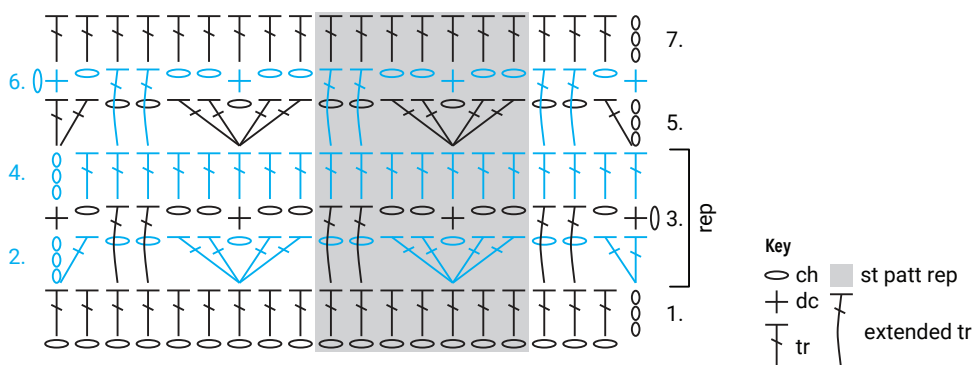
Crochet border using tr around Blanket.

Round 1 (RS) Join Yarn A with ss to first st at top of Blanket, ch2(does not count as st), crochet around: 1tr in each st along top and bottom of Blanket, (1tr, ch2, 1tr) in each corner and approx. 1tr in each row end that ends with a dc, 2tr in each row end that ends with a tr, ss to first tr. Fasten off.

TO FINISH

Weave in all ends and block to measurements.

CROCHET CHART: HEART BLANKET



Pattern copyright © Scheepjes.com. This pattern is available for unlimited personal use. You may print a copy of the pattern or keep a digital copy for personal use only. Do not reproduce this pattern or sell this pattern (either digitally or in print). This document may not be posted online, either as a complete document or in part. You are allowed to sell items that are made using this pattern as long as the designer is credited.